



SDRC Series Repeater

Consumer-Grade Power, Professional Performance

The SDRC Series is ADRF's first Part 20 consumer-grade repeater, designed to deliver superior performance and reliability. Whether you're looking to enhance signal strength in offices, warehouses, apartments, or retail stores, the SDRC offers cutting-edge technology in a compact and user-friendly package.

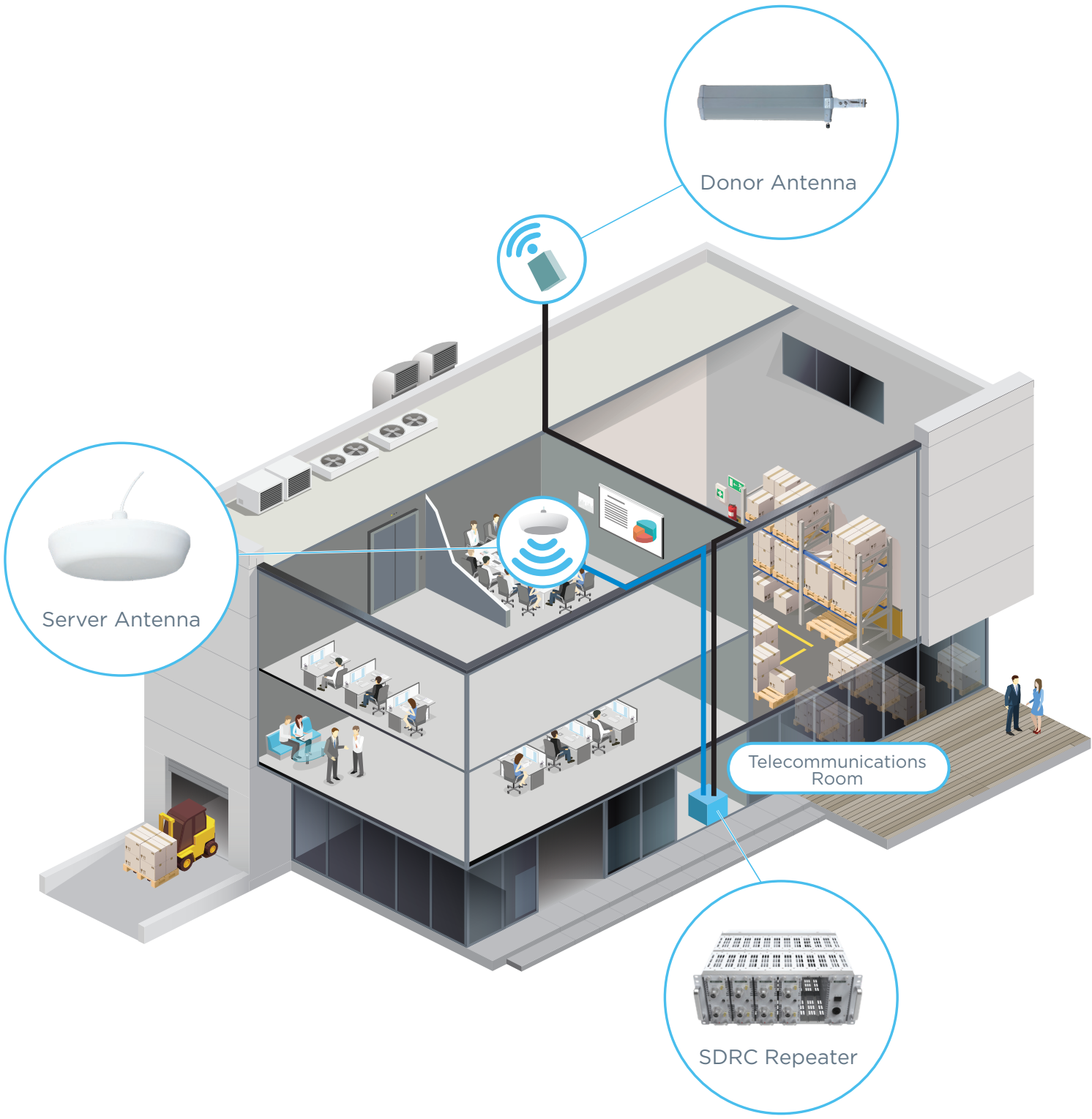
The SDRC's modular structure supports quad-band service in a single unit. With a maximum downlink power of 17 dBm, the SDRC ensures robust signal strength across your coverage area, delivering clear and reliable communication. The digital filtering helps reject adjacent carrier signals, and the user-friendly GUI makes configuring the unit quick and accurate, while ALC, oscillation detection, and overload shutdown features help your network maintain the highest level of performance.

Setting itself apart from other conventional consumer repeaters, the SDRC delivers a suite of advanced, cutting-edge features. Enhance your wireless connectivity, enjoy reliable performance, and simplify and speed up your installation time with the SDRC.

Product Features

- Quad-band service in one body
- Famed ADRF web-based GUI allows remote network control and alarm monitoring
- Hot-swappable modules to minimize downtime
- 17 dBm max downlink output power
- Up to 3 channelized digital filtering with sharp roll-off
- Support for external wireless modem for remote control and alarming
- Channel combiner module provides maximum flexibility for donor/server configurations

System Architecture



SDRC Package (SDRC-17-7FCPA-PKG)



SDRC-CHA-5
CHA-5 (Repeater Module Chassis - 5-slot)

- Both wall and 19" rack mount solution for repeater modules
- Supports up to 5 SDRC repeater modules and 1 SDRC-PSU-5
- Provides active cooling



SDR-CHC-V
CHC-V (Quad-band Channel Combiner)

- N-Type (Female) RF ports
- Splits donor input and combines server output with minimal loss
- Supports 700MHz, Cell, PCS, and AWS
- Wall mounts onto the top of the SDRC-CHA-5 or SDRC-CHA-2
- Available test coupling ports



SDRC-17-7F/C/P/A
Repeater Module

- 4.3-10 (Female) Donor and Server ports
- SMBL (Female) ports for DL Out and UL In
- 700 MHz, Cellular, PCS, and AWS Repeater Modules
- 17 dBm max downlink output power



SDRC-PSU-5
PSU-5 (Power Supply Module - 5 port)

- 100 to 240V AC input
- 250W Power Capacity
- Supports up to 5 SDRC repeater modules
- Required with SDRC-CHA-5



AD-DBYG-698-2700-N
Dual-Band Yagi Antenna

- Supports 698-2700MHz
- N-type (Female) connector
- Wall or Pole Mountable (Bracket Included)



AD-OMNI-SISO-N
SISO Omni Server Antenna

- Supports 698-2700MHz
- N-type (Female) connector
- Ceiling Mountable (Bracket Included)

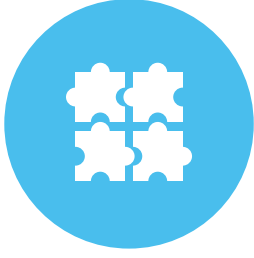


J-LWR200-82-NMS-NMS
82ft: 1/4" LWR-200 Coaxial Cable



J-SF141-1H-4MR-NMR
1.5ft: N-M (Right Angle) to 4.3-10-M (Right Angle) Jumper Cable

SDRC Series Repeater



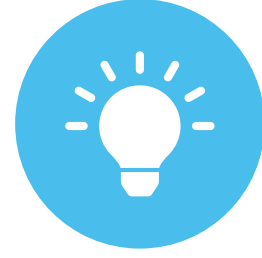
Flexible Architecture

- Support multiple bands and carriers
- Supports 4G/5G
- Single channel combiner unit splits the donor signal and combines the server signal



Superior Performance

- Digital filtering minimizes interference from adjacent carriers
- Band equalization ensures balanced signal strength
- Provides instant coverage with off-air BDA



Easy Setup & Maintenance

- Hot-swappable modules keep the system running with minimal downtime
- Web-based interface allows for remote control and monitoring
- Part 20 system reduces overall cost of installation and project time

ORDERING INFORMATION

Part Name	Frequency Band	Description
SDRC-17-7FCPA-PKG	700/850/PCS/AWS	Includes SDRC-17-7F/C/P/A, SDRC-CHA-5, SDRC-PSU-5, SDR-CHC-V, AD-DBYG-698-2700-N, AD-OMNI-SISO-N, J-LWR200-82-NMS-NMS (x2), and J-SF141-1H-4MR-NMR (x8)

PART 20 SIGNAL BOOSTER REGISTRATION

The SDRC Series is a Part 20 consumer cellular signal booster, and its installation requires registration with the cellular operators in use, which can be completed through their websites. Please click below.



Web www.adrftech.com

Tel +1 818.840.8131 Fax +1 818.840.8138

Technical/Customer Support +1 800.313.9345

3116 West Vanowen Street Burbank, CA 91505

Copyright © 2024 Advanced RF Technologies, Inc. All rights reserved. SDRC_Series_Repeater_Brochure / September 2024

